

# GLASLIFT® 351 Multilifter

Made in Denmark  
Pat. pend.

The self-propelled GlasLift® 351 features an intelligent transport mechanism and the well-known two-circuit vacuum suction as standard equipment. The transport mechanism is fitted with a differential gear and extremely strong.



## Unique handling

### Front wheel differential



Allows the GL351® to turn "on the spot". The turning radius is not more than its own length, because the differential adjust the rotation of the front wheels automatically.

### Millimeter precise sideshift



2 x 50 mm sideshift allows the operator to manipulate loads millimeter precise sideways. This is a great feature for granite slabs, plasterboard and glass fitting jobs.

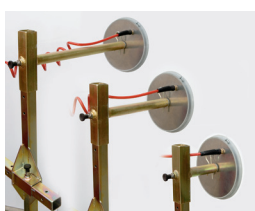
## Unique safety

### Powerful front wheel drive



The GL351® has a differential front wheel drive and rugged rubber tires, this means superior traction, precision and agility. Furthermore traction will increase proportionally with the load weight.

### Extension arms



Extension arms for suction discs allows you to extend the fitting area forwards. 100 mm arms are standard on delivery. Extensions arms are available as extras in 300 mm and 500 mm.

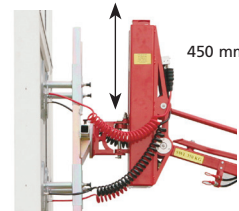
## Unique adaptability

### Semi offroad





Ground clearing height of 20 cm combined with rugged tires give semi-off-road capabilities and building site access. The powerful drive allows the machine to drive uphill as well as downhill fully loaded.

### Vertical adjustment



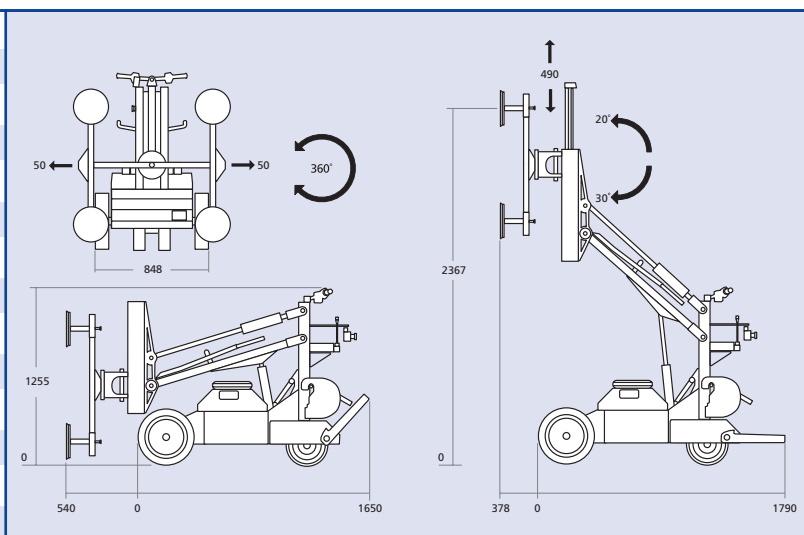
The unique head allows you to adjust loads vertically 450 mm's regardless of the angle of the lifting arm, thanks to the built-in hydraulic feature.

# GLASLIFT® 351 Multilifter

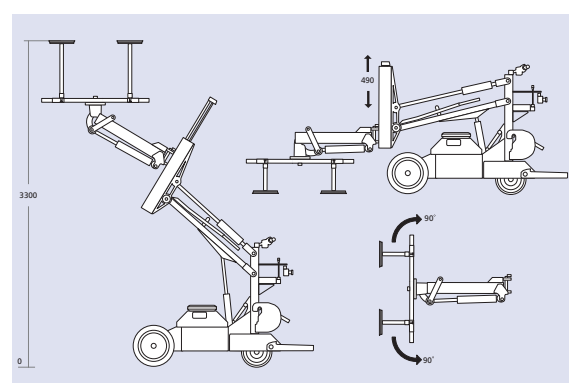
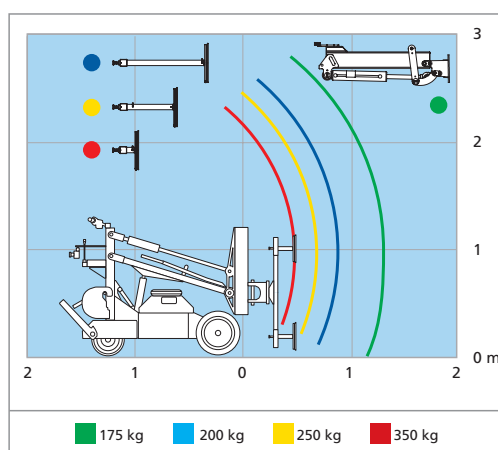
 Made in Denmark  
 Pat. pend.

## Technical data

Description	Value
Loading capacity	350 kg
Own weight	595 kg
Counter weights	8 x 25 kg mm
Machine min. width	848 mm
Machine min. length	2170 mm
Machine min. height	1255 mm
Autonomy	4 hours
Front wheels	Puncture proof
Rear wheels	Puncture proof
Charging current	220 or 110 V
Battery specs.	152 Ah (12 v)
Charging time	10-100% 6 hours
Charging time	25-70% 1 hour



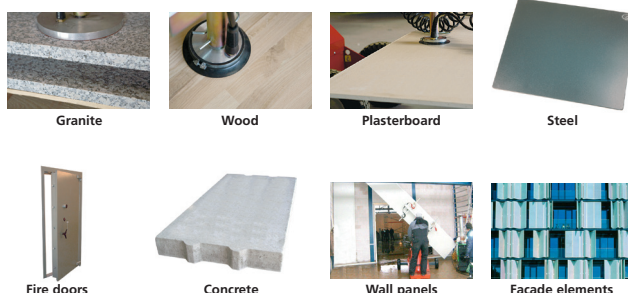
In this diagramme you are presented with the lifting data of the machine with the different extension arms and with the horizontal lifting arm.



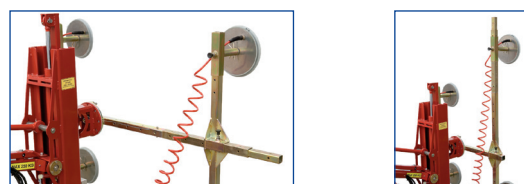
With the horizontal lifting arm as an optional extra you are able to pick up loads from ground level and mount it up to 3,2 meters.

## Unique adaptability

### Materials



### Universal extension bar for the front lifting system



The construction of the extension bar enables it to extend the horizontal main frame as well as the vertical cross bar on the standard machine.

GlasLift® 351 complies with the requirements of Machinery Directive 2006/42/EC.

Please contact AMS to book a demonstration.

Dealer:

**Assorted Machinery & Services Pty. Ltd.**  
Australian Dealer for HH-Intellitech (Excluding W.A.)

Ph: (03) 9807 5834  
Mobile: 0458 122 880

Email: [steve@amshhi.com.au](mailto:steve@amshhi.com.au)  
[www.hh-intellitech.dk](http://www.hh-intellitech.dk)

**AMS**  
Assorted Machinery & Services Pty. Ltd.